

Installing an SSL Certificate on a Windows Device (Manually)

Installing an SSL Certificate (as a Trusted Root Certification Authority)

1. Download the certificate file from the [James Hargest website](#) (E-learning/Wifi security certificate)
2. Right-click on the certificate file, and choose **Open**. You may see a Security Warning window. If so, choose **Open**.

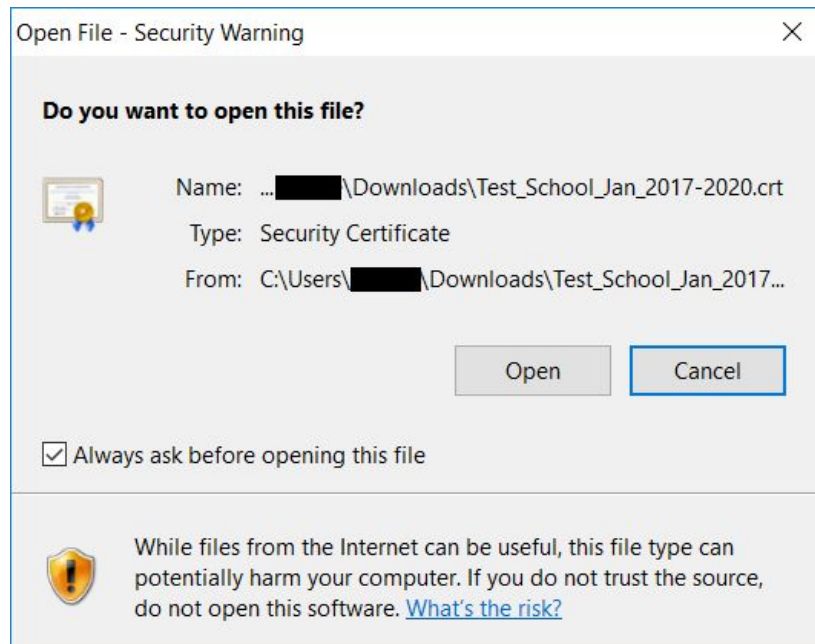


Figure 1: The Security Warning dialog - choose **Open** to continue

1. The Certificate window will appear. Click **Install Certificate...**

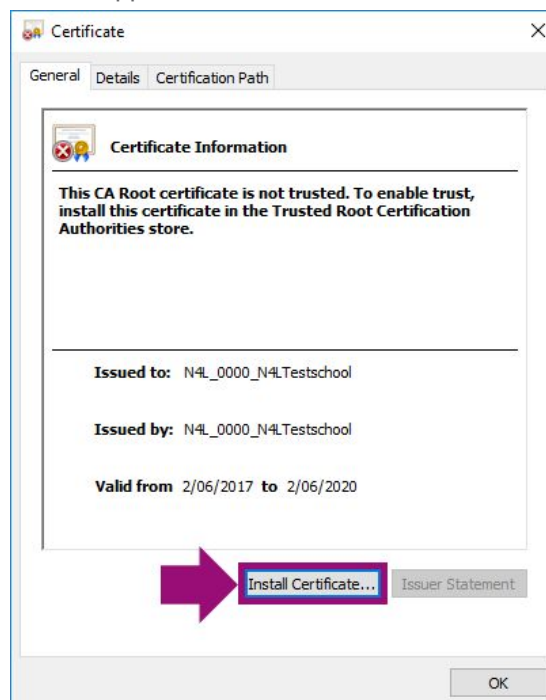


Figure 2: The certificate window. This shows details about the certificate

1. Choose a Store Location (see [Considerations](#)) and click **Next**

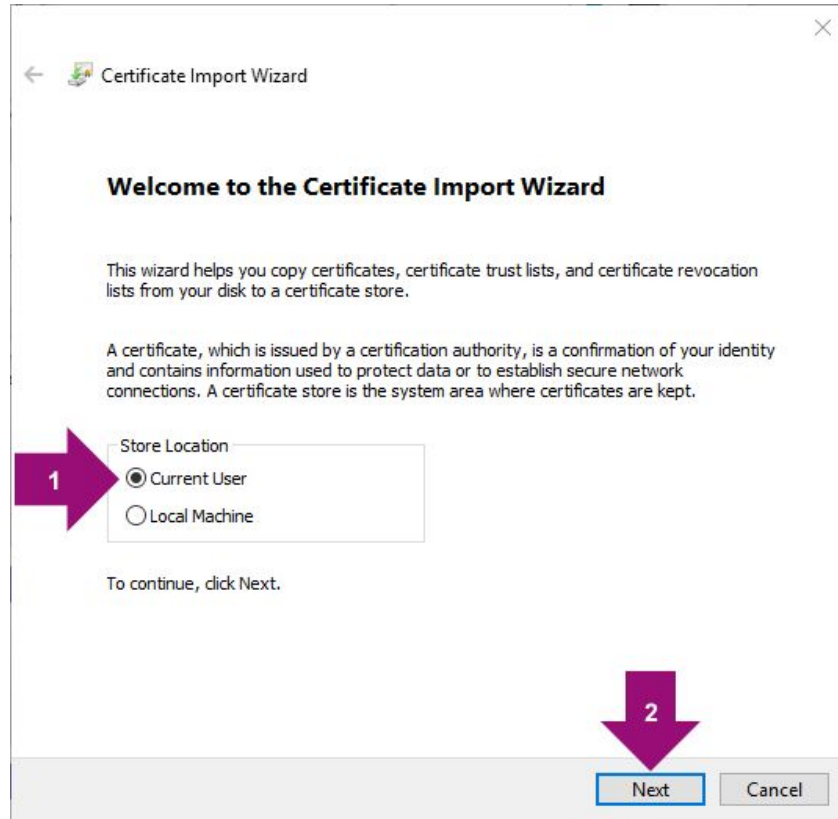


Figure 3: Choosing a certificate store

1. On the next screen, click **Browse**. Choose the **Trusted Root Certification Authorities** store. Click **OK**.

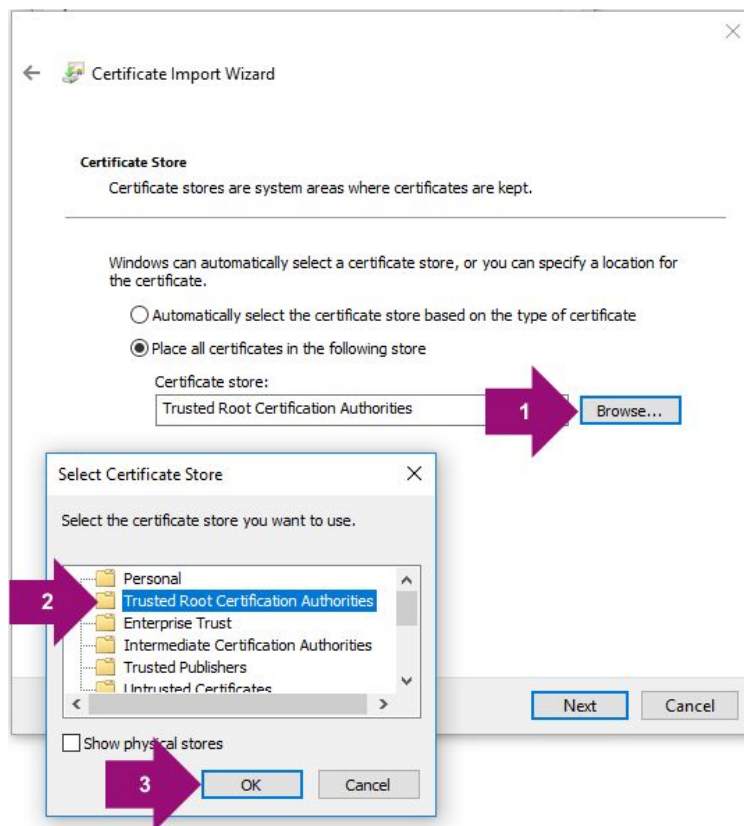


Figure 4: Click Browse to bring up the Select Certificate Store window

1. Click **Finish**.

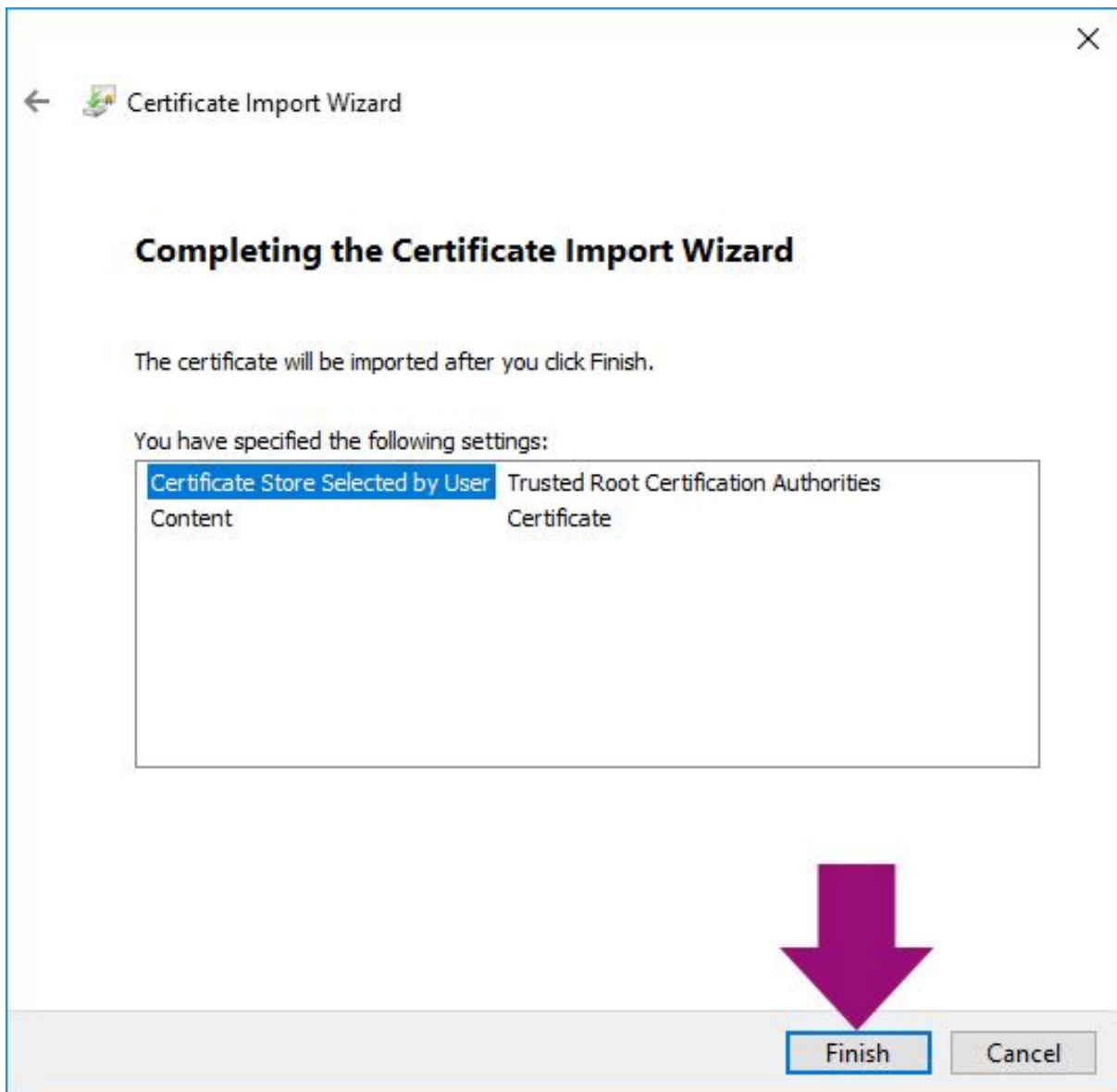


Figure 5: Click Finish to complete the certificate installation process