

Installing an SSL Certificate on an Apple OS X Device (Manually)

Try these instructions first. The alternative instructions are after these ones.

When installing certificates manually onto devices which run Apple OS X, some additional steps are required to maintain maximum security. This involves installing the certificate into the correct keychain.

This guide assumes you have chosen the *System* keychain, but the steps should be very similar for the *login* keychain.

Installing an SSL Certificate (as a Trusted Root Certification Authority)

1. Download the certificate file from the [James Hargest website](#) (E-learning/Wifi security certificate)
2. The certificate will download to your Downloads Folder. Double-click the certificate file.
3. The Add Certificate window will appear. Click **Install Certificate...**

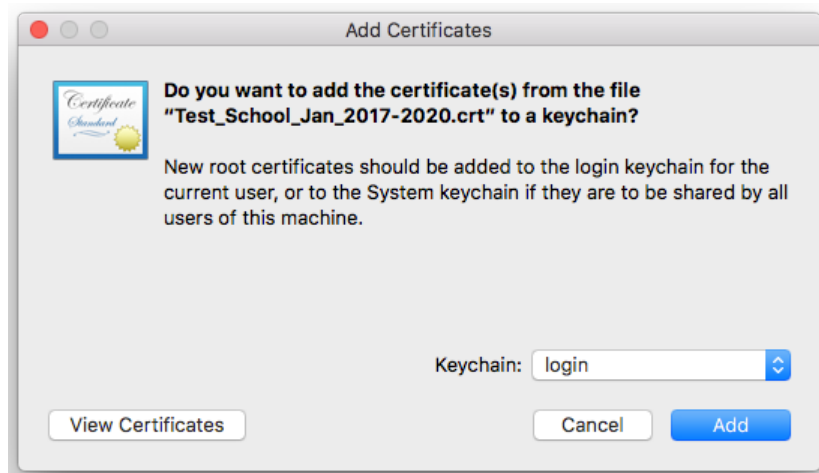


Figure 1: The Add Certificates window - choose the Keychain in which to store the certificate

1. Choose a Keychain (use the login keychain if only one user will access the internet at James Hargest, for more users use the System keychain) and click **Add**.

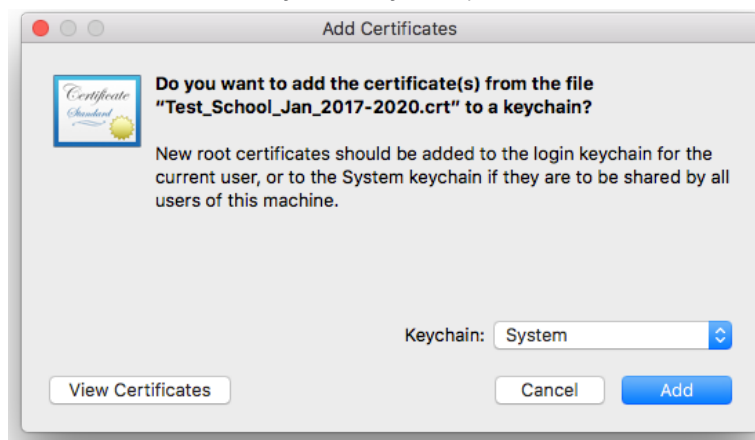


Figure 2: The System Keychain selected

1. You will be asked to verify your Password to modify the Keychain. Enter your password and click **Modify Keychain**.

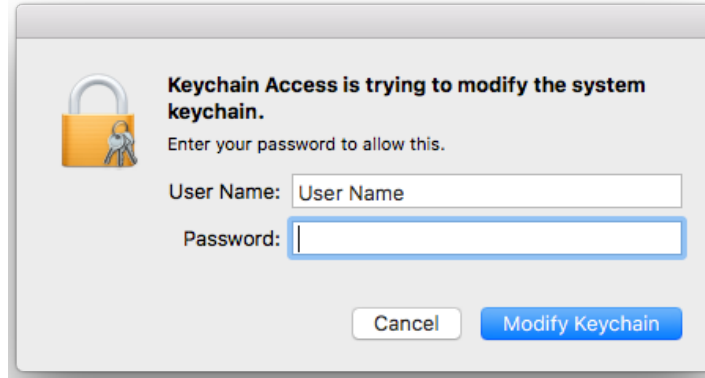


Figure 3: The Keychain Access verification window

The Certificate is added to the Keychain.

Ensure you can see the certificate in the list.

1. In *Keychains*, click **System** then, in *Category* click **Certificates**
The *System - Certificates* are listed.

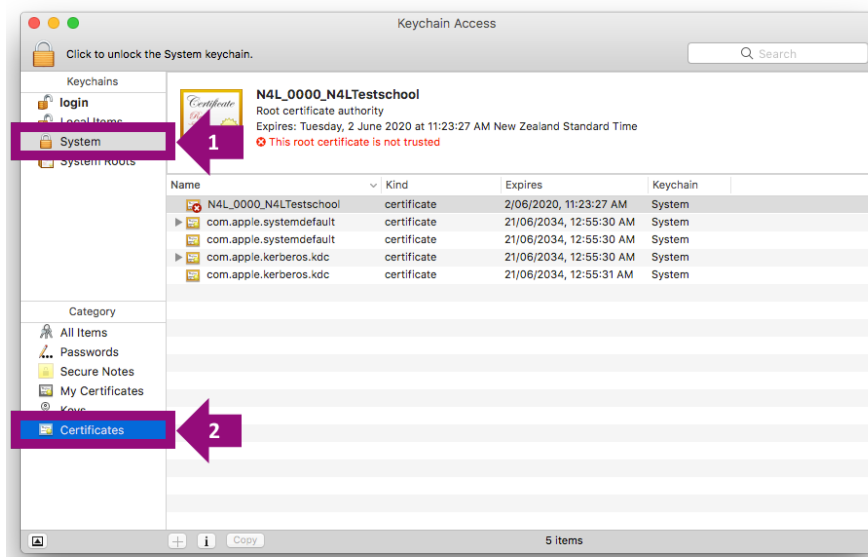


Figure 4: The Keychain Access - System - Certificates list

Trusting the Certificate

Double Click on the Certificate to trust.

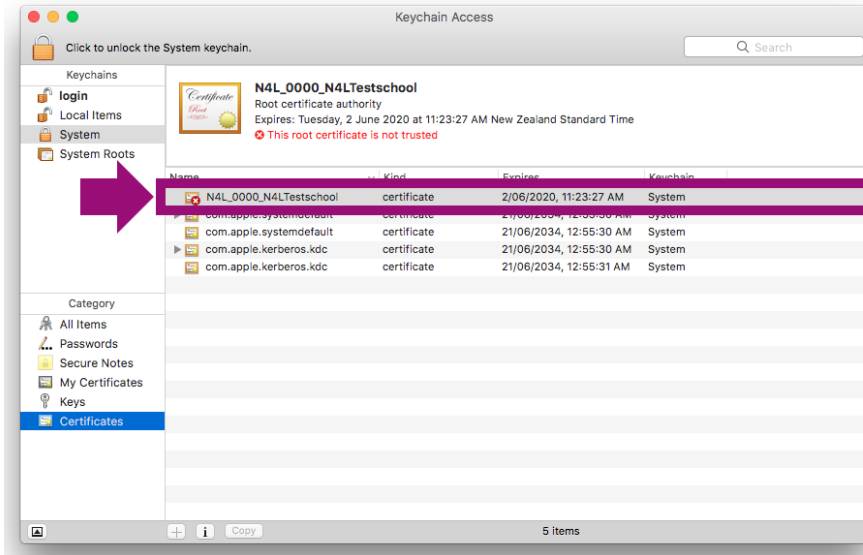


Figure 5: The Keychain Access - System - Certificates list

The Certificate Detail window will be displayed.

1. Click on >Trust

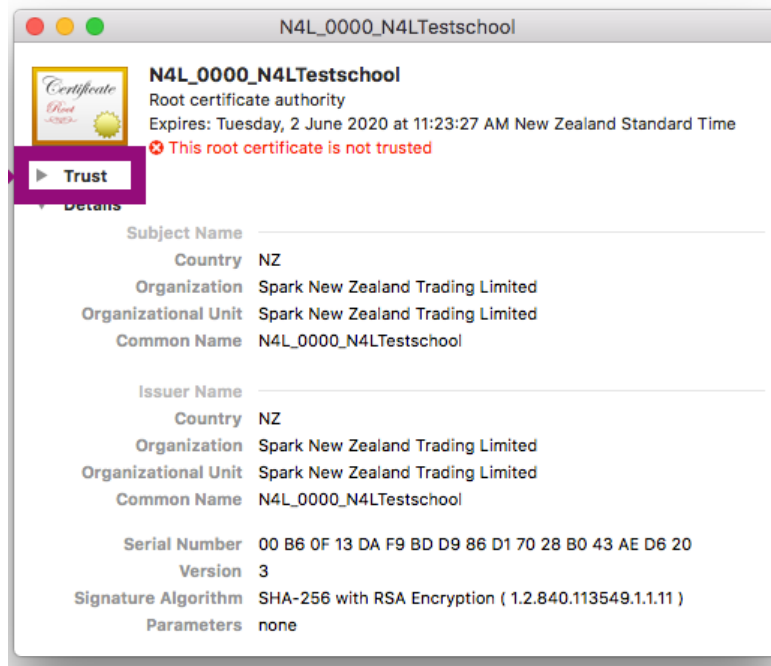
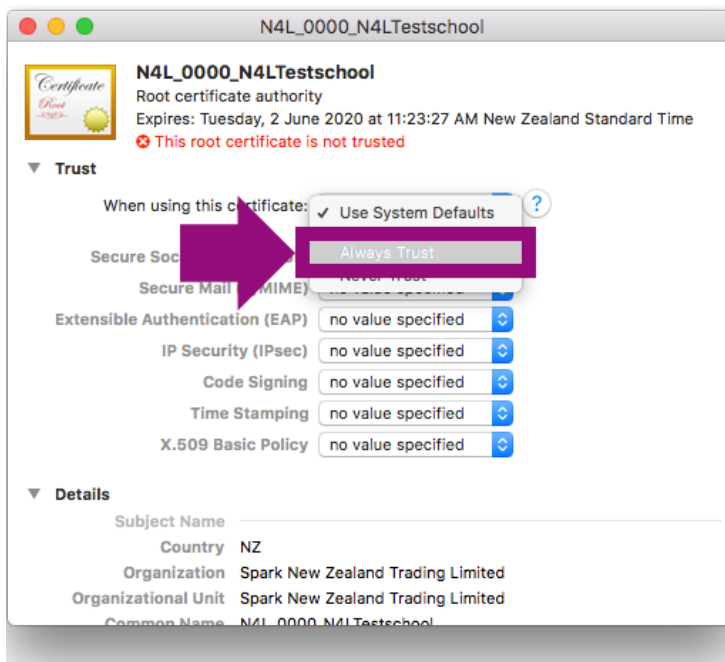
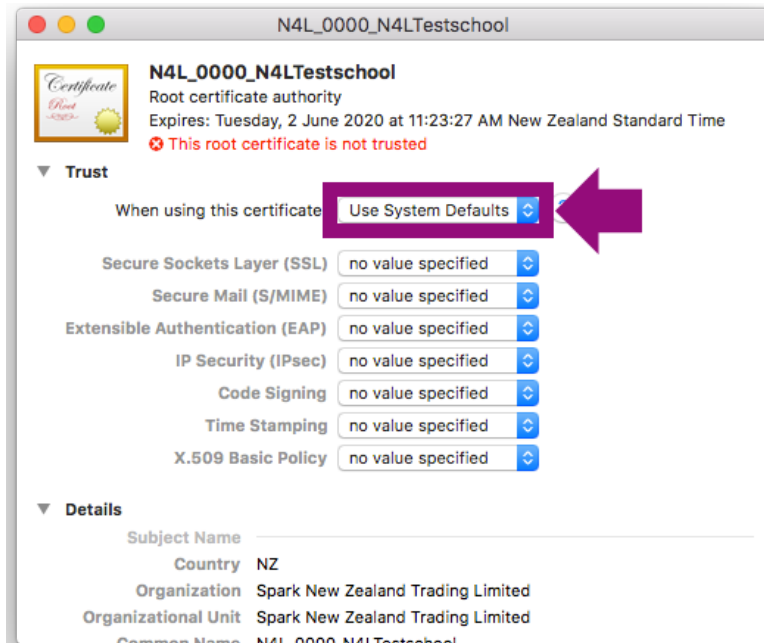


Figure 6: The Certificate Detail window

The Trust section expands.

1. Click on the *When using this certificate:* drop down list, and choose **Always Trust**



Figures 7 & 8: The Trust section and Drop-Down

All of the Drop-Downs will change to **Always Trust**.

Click on the **Exit** button (Red, top left corner of window).

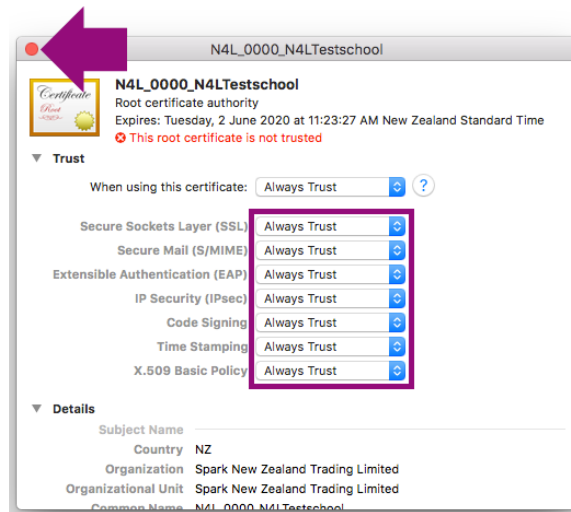


Figure 9: Everything marked as trusted

You will be asked for your password to verify the change.

1. Enter your password and **Click the Update Settings** button.

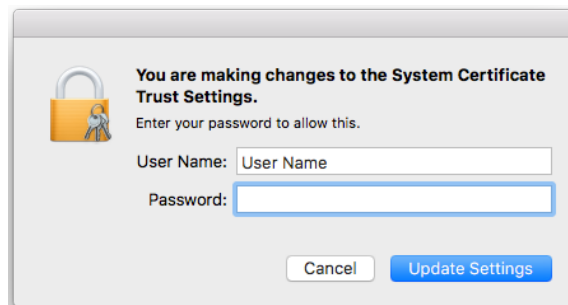


Figure 10: Confirm with your password

In the Certificate list, the Certificate should now show that it is trusted.

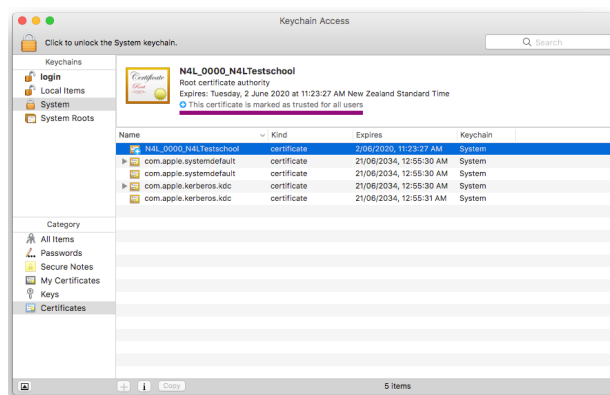


Figure 11: The Certificate List

1. Close *Keychain Access*.